





Location  
of  
Gaedeke  
Lake and  
Alatna  
River



Arctic Circle

# Village of Bettles, above the Arctic Circle





Otter flying in to Bettles with crashed plane from wilderness lake



# Gates of the Arctic Ranger Station in Bettles, AK

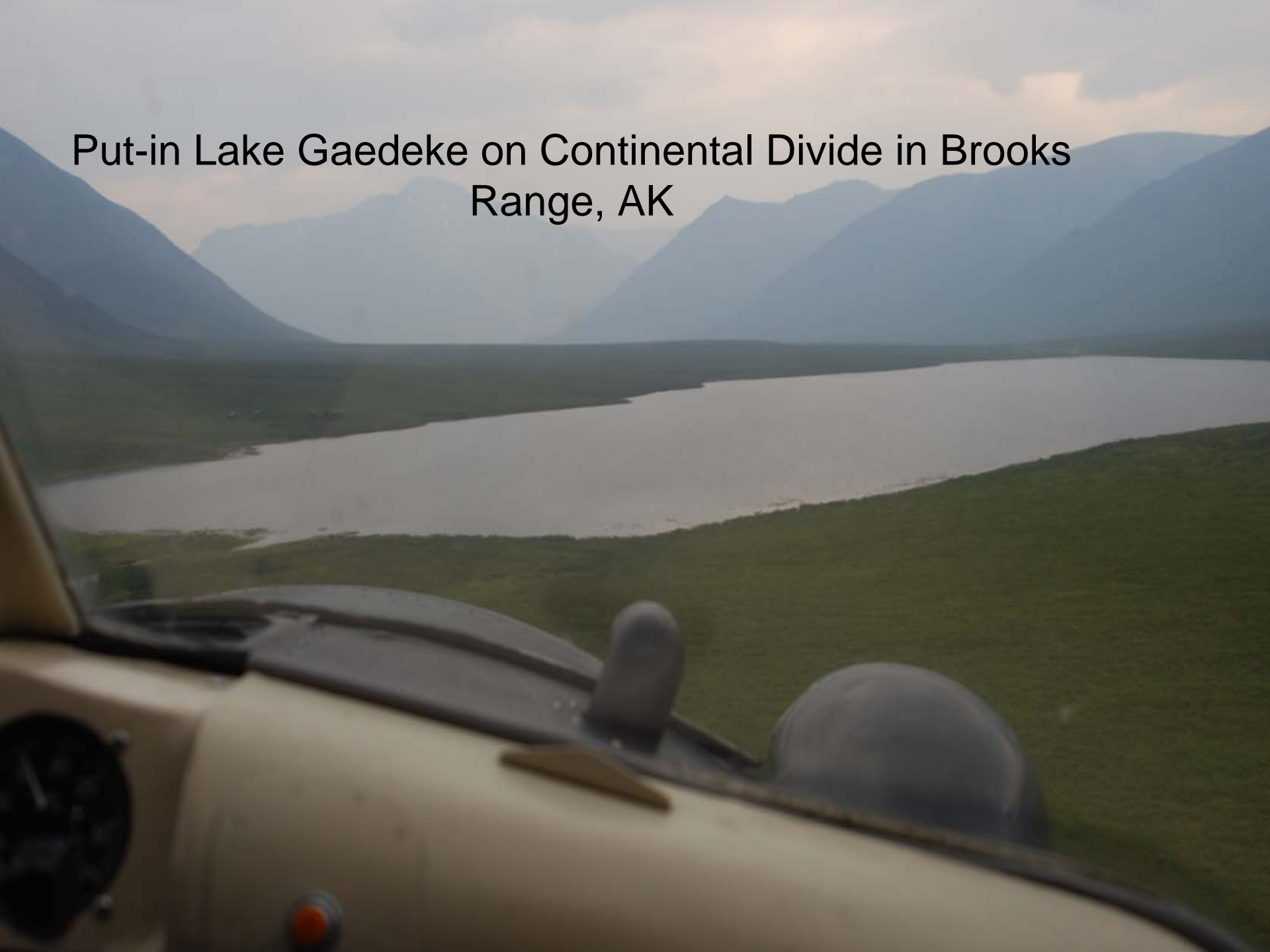




# Sorting gear in hanger at Brooks Range Aviation in Bettles, AK



Put-in Lake Gaedeke on Continental Divide in Brooks  
Range, AK



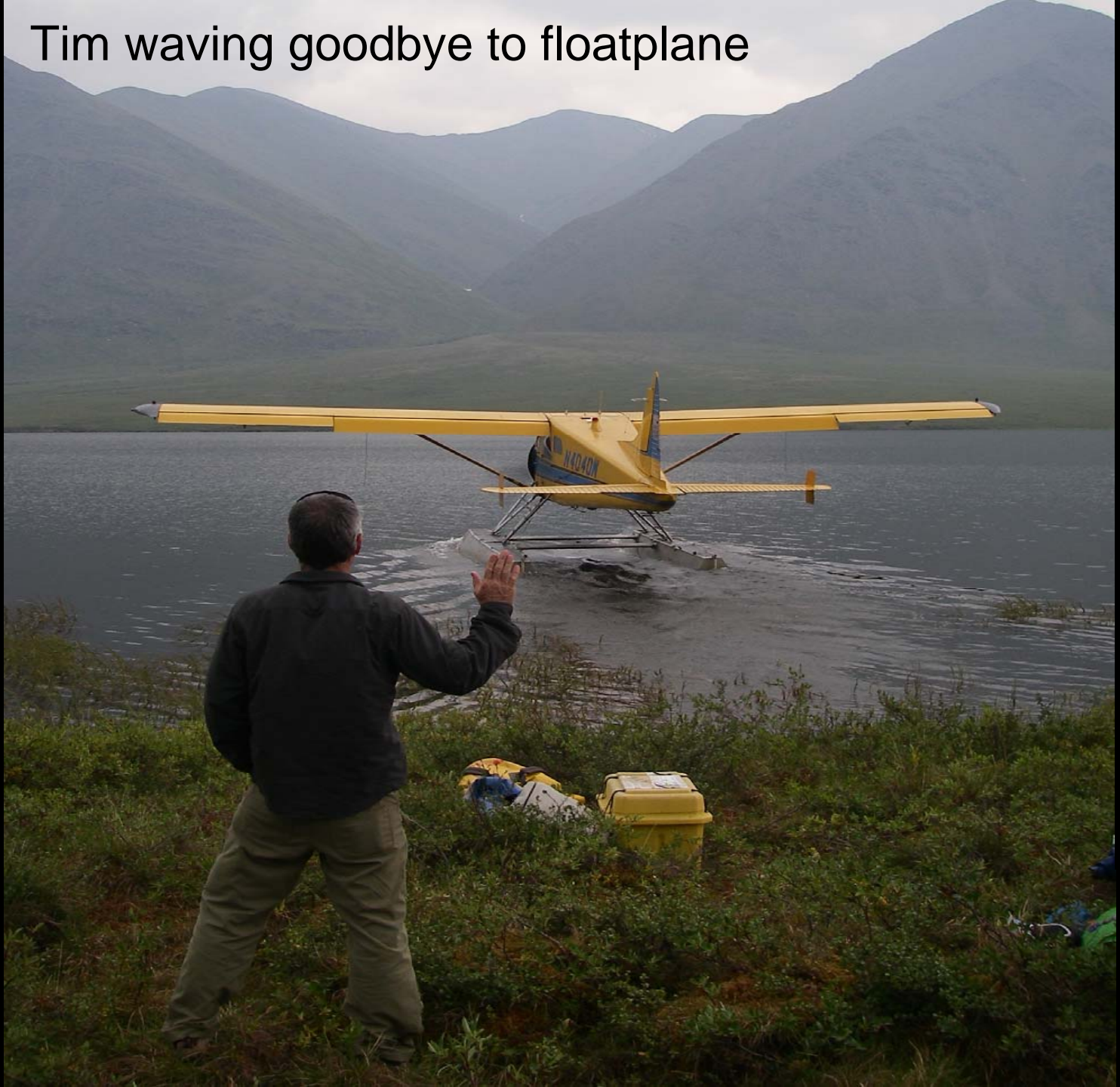


Put in at Gaedeke Lake on Continental Divide  
From left, Lanny Goyn, Mark McKinstry, Tim Patton, Mike Bonnet, and  
James Morel





Tim waving goodbye to floatplane





# Mound of gear at put-in





James with Lake trout from outlet of Gaedeke Lake, Alatna River





# Portaging gear in upper Alatna River



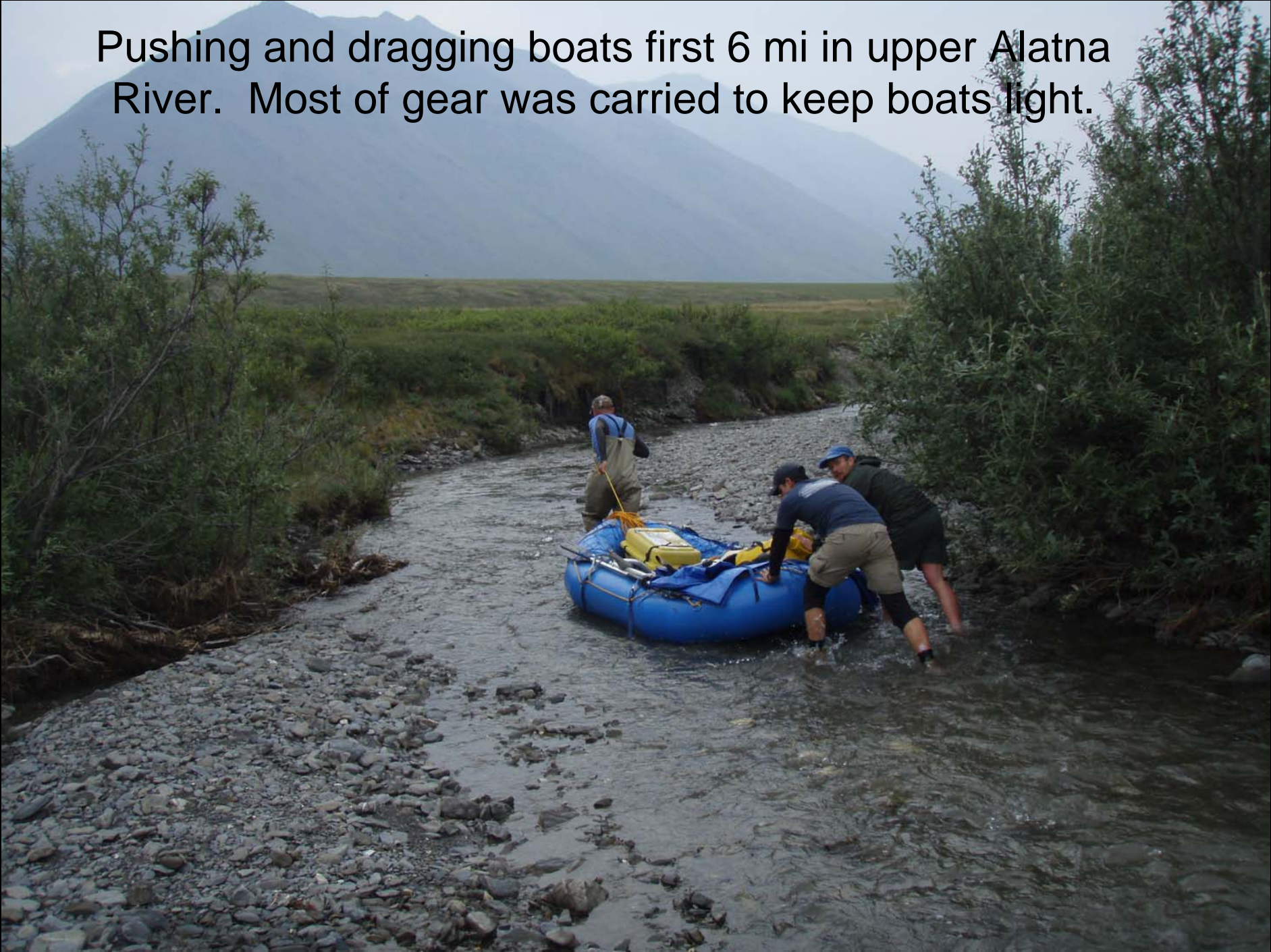


Caribou moving through valley





Pushing and dragging boats first 6 mi in upper Alatna River. Most of gear was carried to keep boats light.





Alatna River on first day.



## Second night's camp on Alatna River





Typical scenery in upper Alatna





# Typical river conditions in upper Alatna River





# Upper Alatna River





Big brown bear coming into camp





James scaring bear in camp





Bear leaving camp



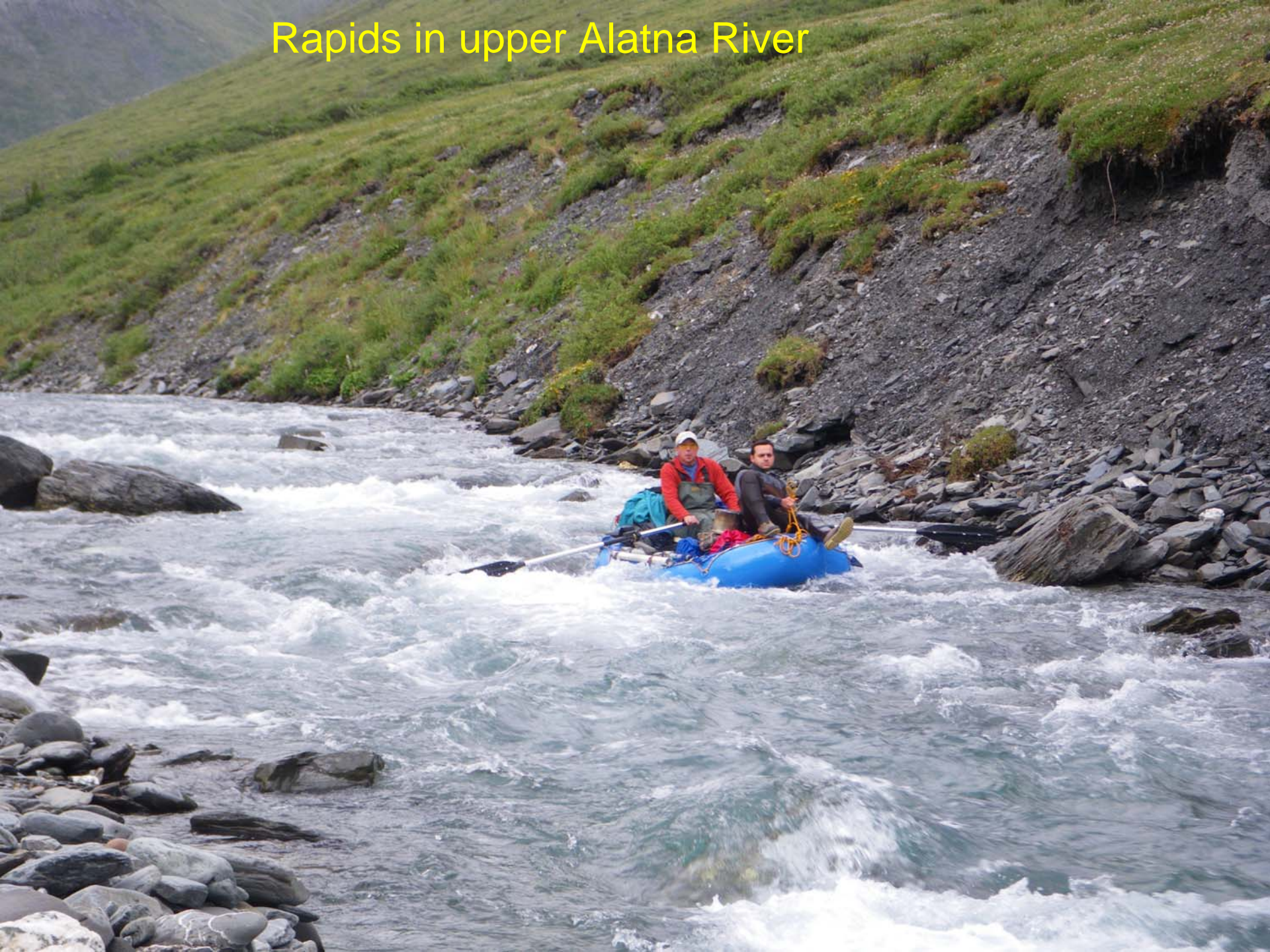


# Upper Alatna River valley





## Rapids in upper Alatna River





Tim, James, Mark, and Lanny on middle Alatna





River getting bigger on third day



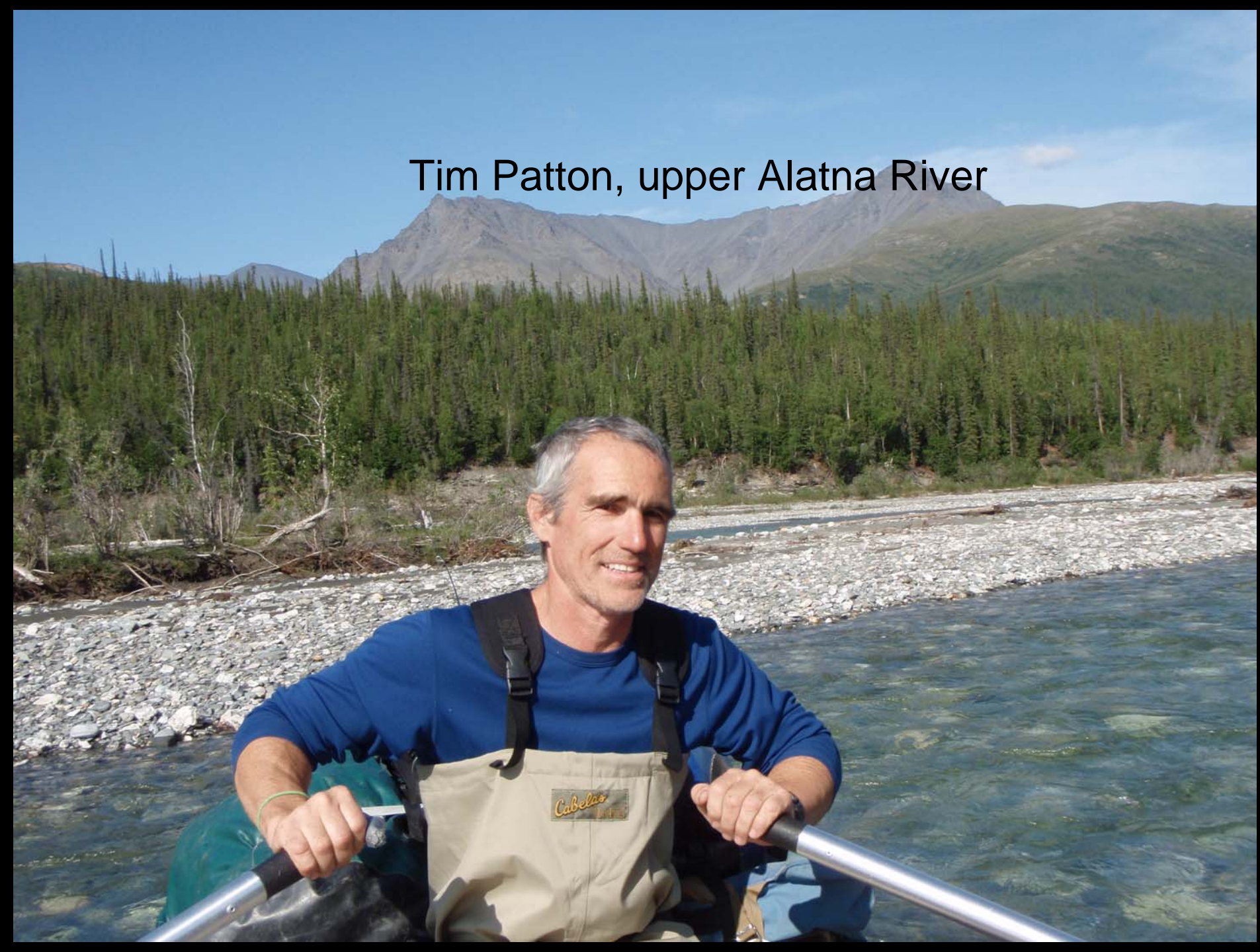


# Caribou in Alatna River Valley





Tim Patton, upper Alatna River





Cooking area separate from tents, typical dinner ~ 11pm at night—the sun never set





Looking up Arrigetch Valley from Alatna River.  
Hike/bushwack goes 7-9 mi up this valley.







Hanging ~750 lbs of gear to keep bears from destroying it before 4-day hike.

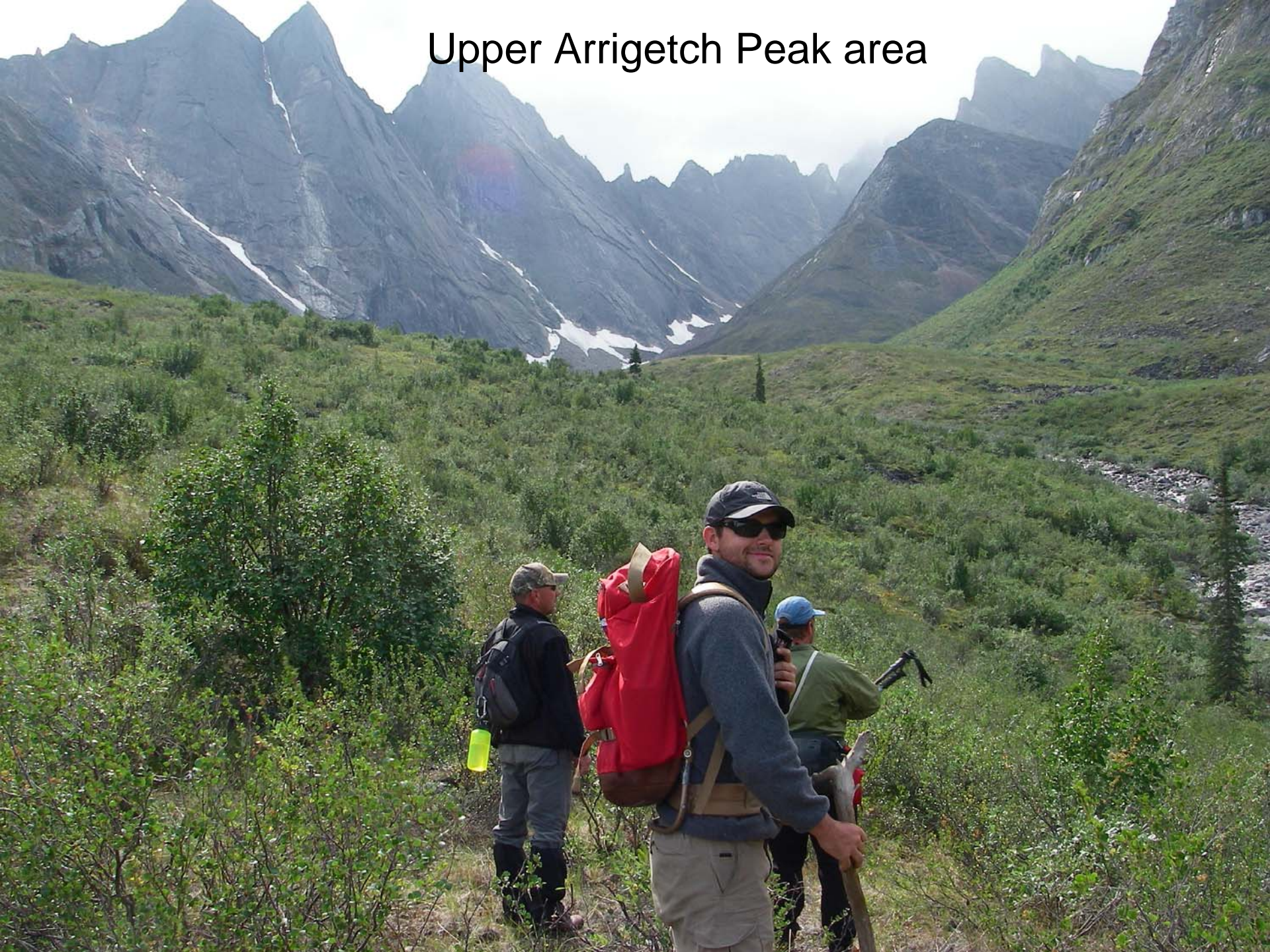


Hiking up Arrigetch Creek, alders were THICK





# Upper Arrigetch Peak area



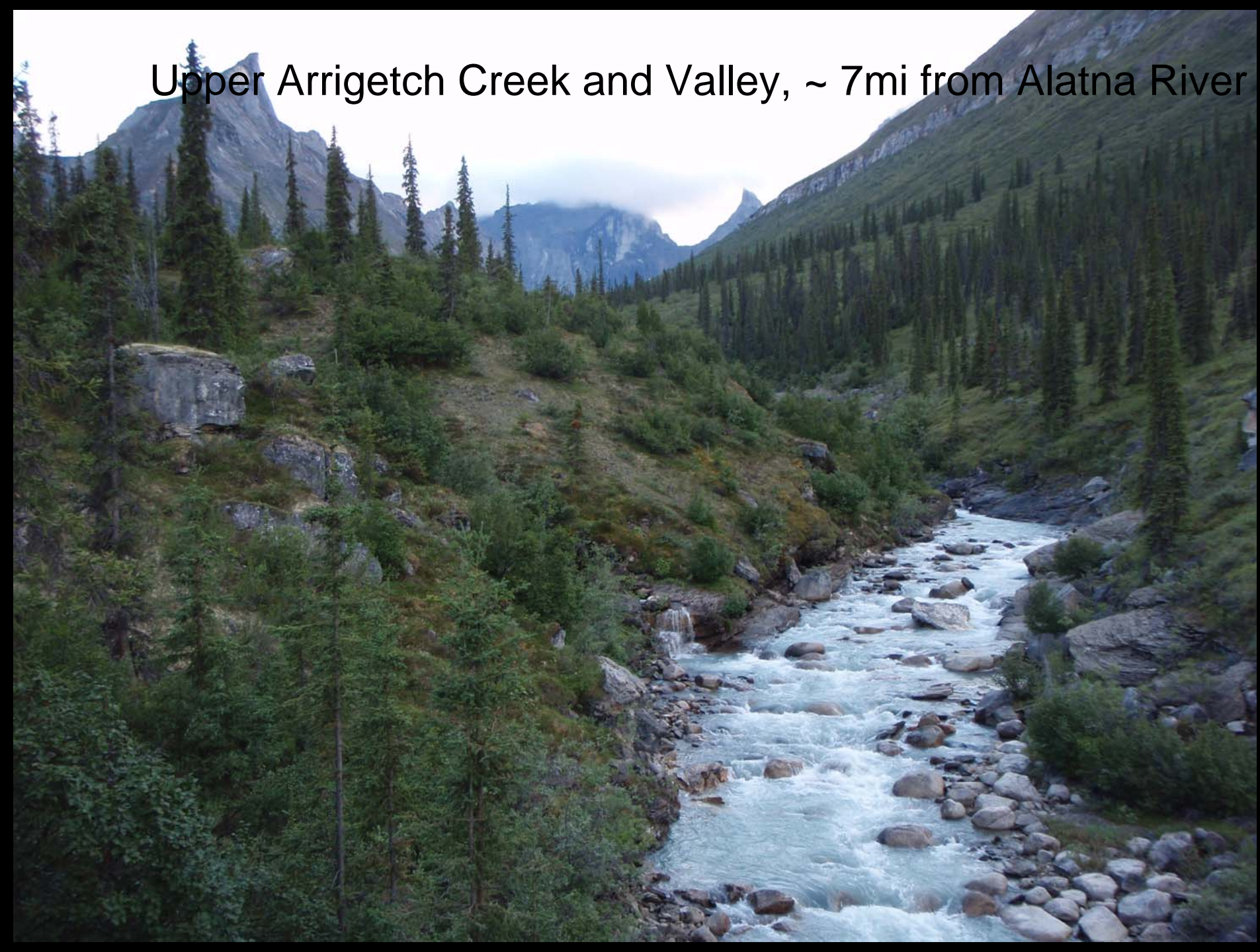


# Arrigetch Creek



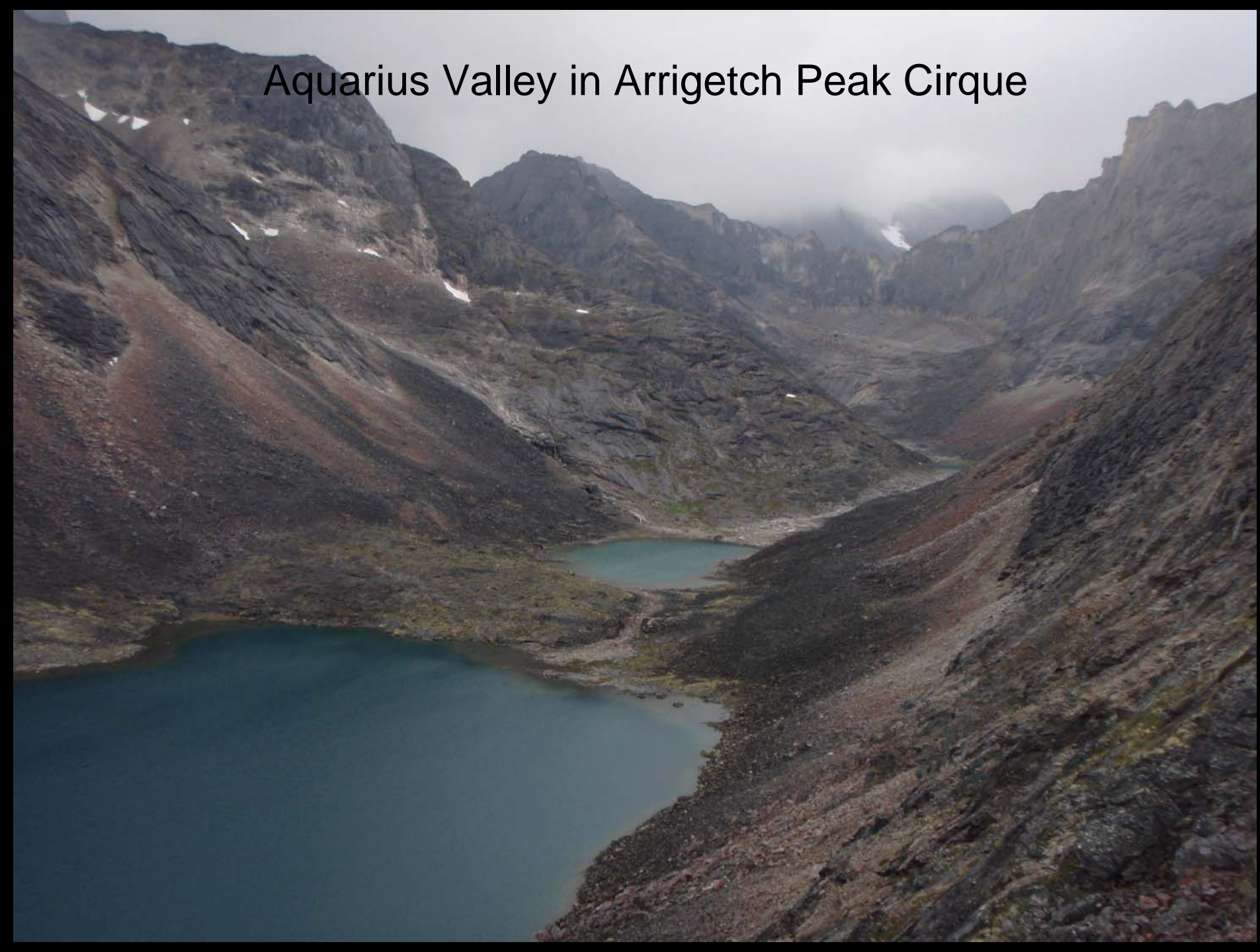


Upper Arrigetch Creek and Valley, ~ 7mi from Alatna River





# Aquarius Valley in Arrigetch Peak Cirque



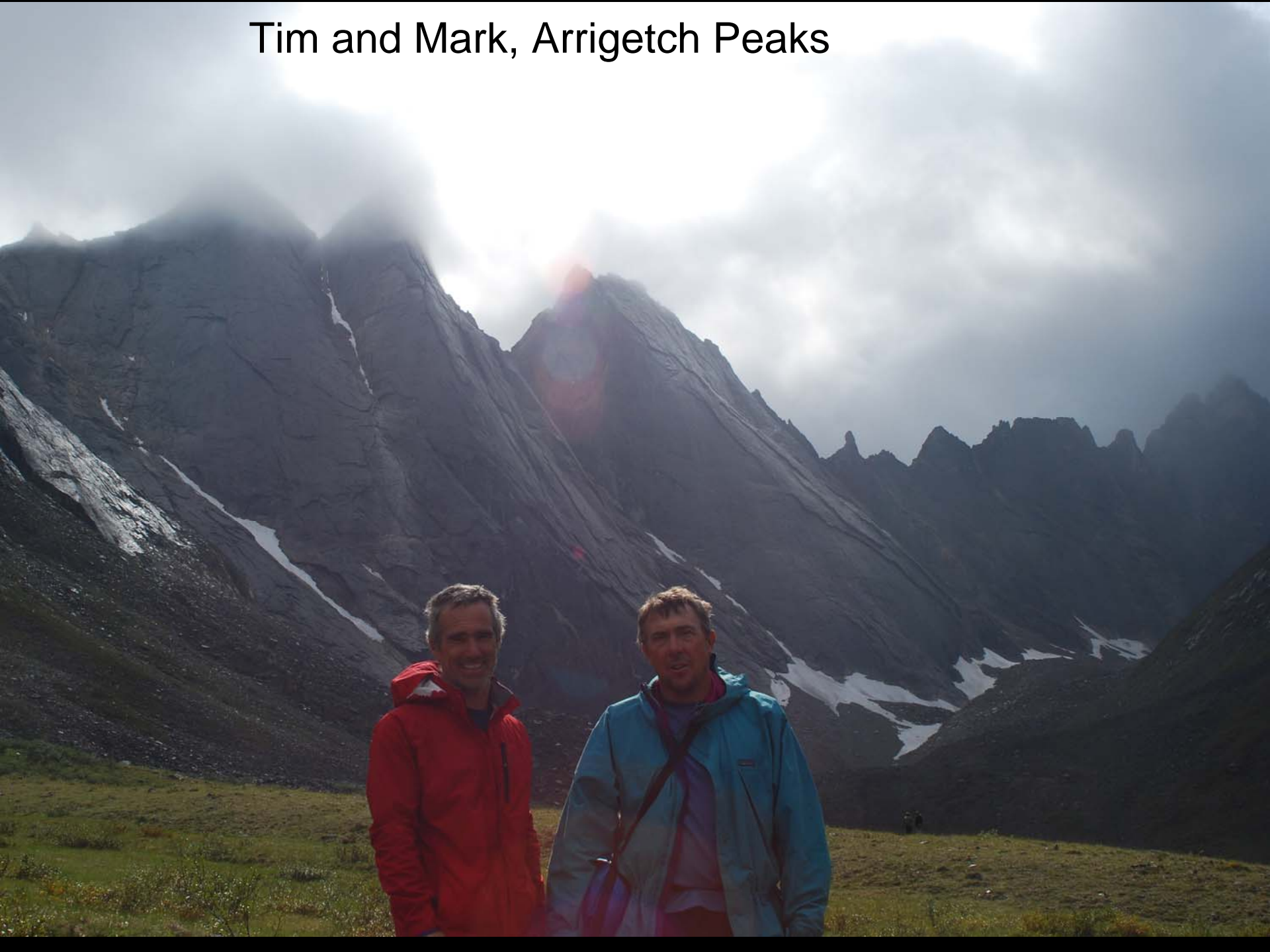


# Upper Arrigetch Peak area





Tim and Mark, Arrigetch Peaks



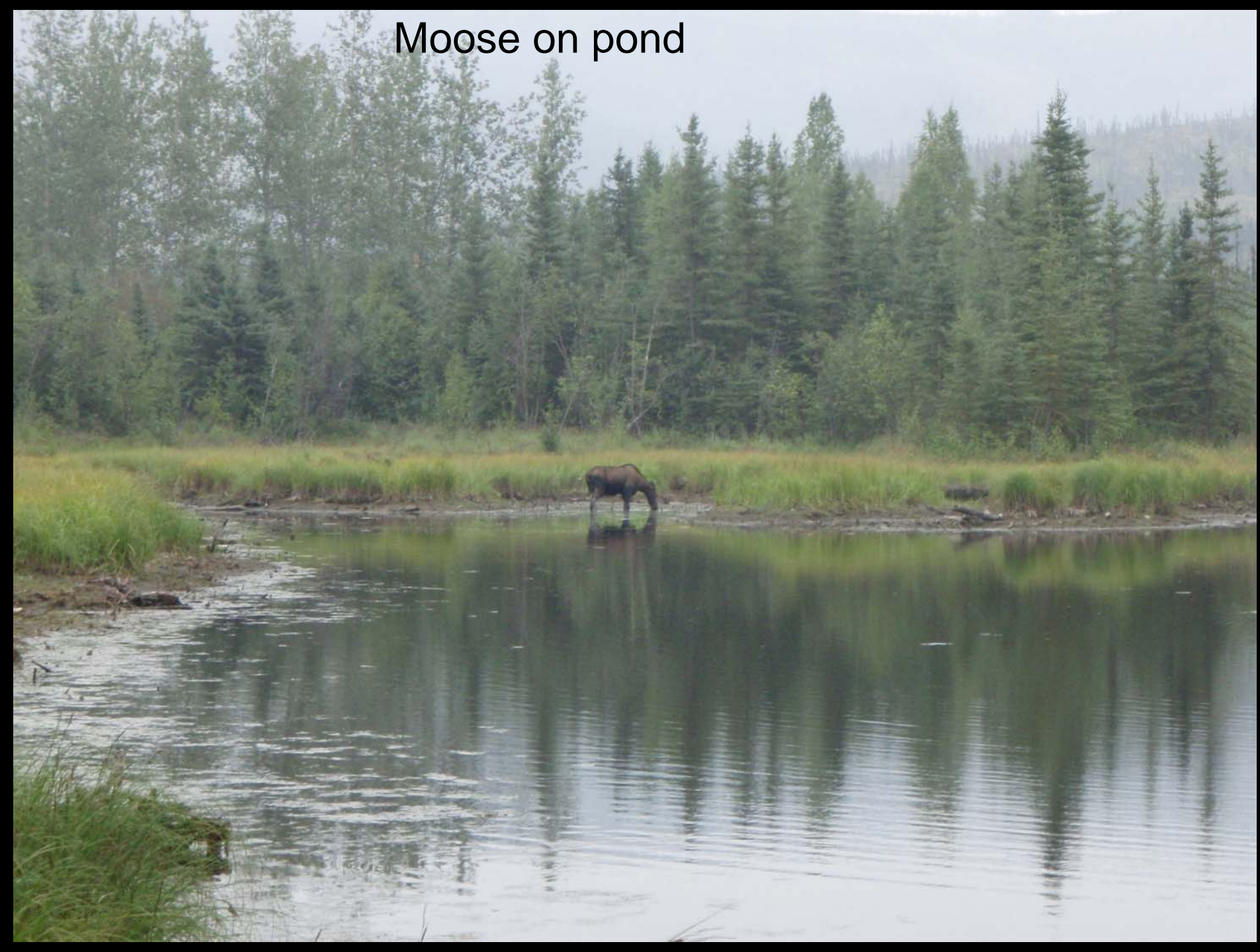


## Aquarius Valley, Upper Arrigetch Peak Cirque





Moose on pond





Tim being a man in Man's Country





Caribou skull





# Typical scenery, Alatna River





Tim and Lanny, Alatna River Valley





Typical camp site and kitchen on Alatna, River





James, Lanny, Tim, Mike, and Mark, Alatna River







Portaging boats 1 mile to take-out Lake Takahula





Portaging gear to take-out lake



# Take-out lake, Takahula Lake





Lanny, Tim, and James with northern pike—all the food we had at the end of the trip.





## Our Otter ride back to Bettles





Bunkhouse at Brooks Range Aviation airstrip in Bettles, AK

SKID ROW

